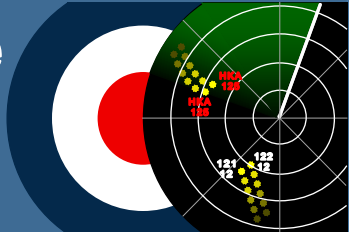


More than 20 Exhibition rooms  
Allow 2 to 4 hrs

# How to find us



RAF Air Defence  
Radar Museum  
Neatishead



## Exhibitions Rooms not to miss:

- World War II Room
- Cold War Operational Rooms
- Jaguar, Tornado & Victor Cockpits
- Bloodhound Missile display
- History of RAF Neatishead
- The RAF Coltishall Collection



RAF Air Defence Radar Museum



## Discover how Neatishead watched over the sky



Admission tickets valid for 12 months  
We tell the story of how Radar played a pivotal role in winning the Battle of Britain and defending the skies during the Cold War.

Registered Charity No. 1058887

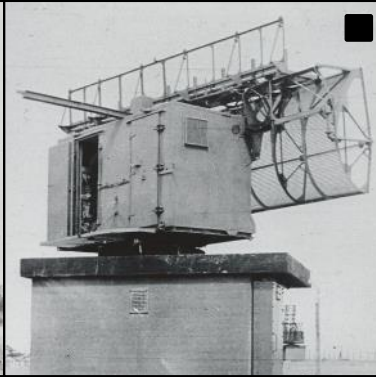
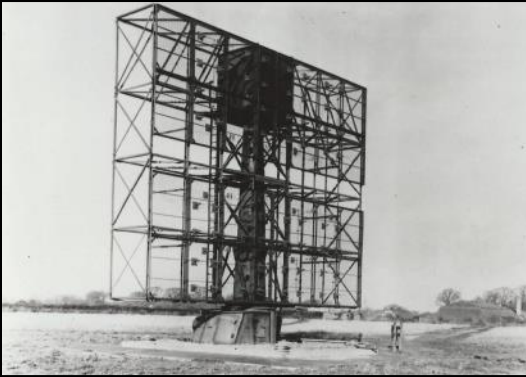
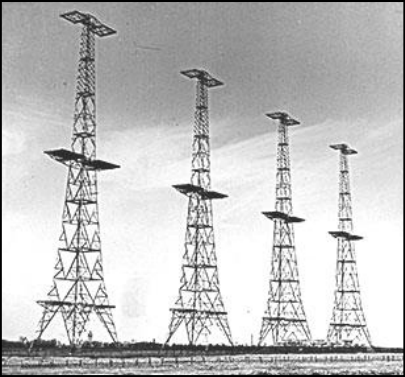
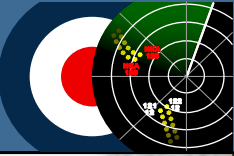
**RAF AIR DEFENCE RADAR MUSEUM**  
Formally part of RAF (RRH) Neatishead  
Birds Lane, Neatishead, Nr. Horning, Norwich  
NR12 8YB  
Tel. 01692 631485  
curator@radarmuseum.co.uk



Opening days for 2020  
Tues, Wed, Thurs & Sat  
Public holiday Mondays  
10.00am to 5.00pm  
31st March to 31st October

[www.radarmuseum.co.uk](http://www.radarmuseum.co.uk)

# The History of Air Defence & the Development of Radar



See how a RAF plotting room worked during World War 2



Visit our Cold War Operations Room preserved in its original state



RAF Neatishead had a major front line operational role in our Air Defence System.

One of the largest museums in North Norfolk, situated within the original 1940s RAF buildings.

Regular presentations during the day by specialist volunteers with visual aids to enhance your visit.

The English Electric Lightning, intercepting a Soviet Bear during the Cold War



**Crumbs Café**  
Hot & cold snacks  
Locally produced



OPEN  
10.00am  
To  
4.30pm

The Bloodhound - A Surface to Air Missile Part of Great Britain's Air Defence

