

**More than 20 Exhibition rooms**  
**Allow 2 to 4 hrs**

**Exhibition Rooms not to miss:**

- World War II Operations Room
- Cold War Operations Room
- Tornado cockpit and Jaguar cockpit with flying display
- Bloodhound Missile display
- History of RAF Neatishead
- The RAF Coltishall Collection

**RAF Air Defence Radar Museum**

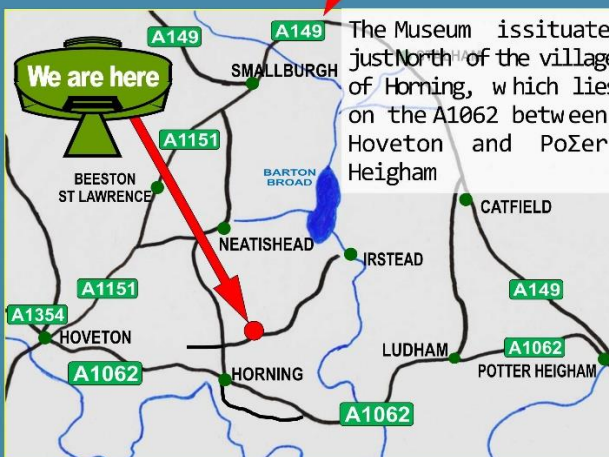


**Admission tickets valid for 12 months**

We tell the story of how Radar played a pivotal role in winning the Battle of Britain and defending the skies during the Cold War.

Registered Charity No. 1200585

# How to find us



The Museum is situated just North of the village of Horning, which lies on the A1062 between Hoveton and Potter Heigham

## RAF AIR DEFENCE RADAR MUSEUM

Formerly part of RAF (RRH) Neatishead

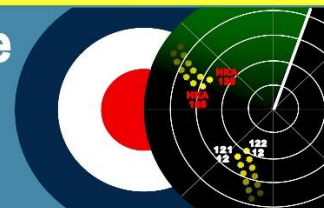
Birds Lane  
Neatishead  
Norwich  
NR12 8YB

Tel. 01692 631485

manager@radarmuseum.co.uk



## RAF Air Defence Radar Museum Neatishead



### Discover how Neatishead watched over the sky



### OPEN DAYS

Tues, Wed, Thurs, Fri & Sat

Public holiday Mondays

10.00am to 5.00pm

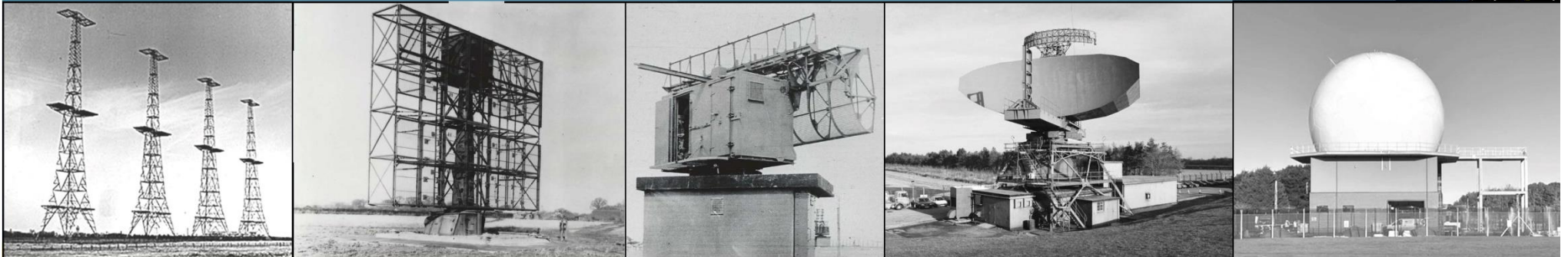
See our website for further details

Advance Tickets may be booked Online

[www.radarmuseum.co.uk](http://www.radarmuseum.co.uk)



# The History of Air Defence & the Development of Radar



See how a plotting room worked during World War II



Visit our Cold War Operations Room preserved in its original state



RAF Neatishead had a major front line operational role in our Air Defence System.

One of the largest museums in North Norfolk, it is situated within the original 1940s RAF buildings.

Regular presentations during the day by specialist volunteers with visual aids to enhance your visit.

Please be aware that some areas of our museum are only accessible by using a small number of steps.

The English Electric Lightning, intercepting a Soviet Bear during the Cold War



## Crumbs Café

Light hot & cold refreshments



OPEN  
10.00am  
to  
4.00pm

The Bloodhound -  
A Surface to Air Missile,  
part of Great Britain's  
Air Defence

